

# MIDDLE SCAR CAVE

An aqueous adventure..

---

**Date :** 19<sup>th</sup> May 2025

**Present :** Duncan Jones, Rob Santus

**Weather :** Sunny, not as warm as it had been, especially in the wind.

After one of the driest and sunniest springs for many a decade we wanted to try and take advantage of this rare weather. Having heard that Middle Scar Cave had been reopened, we figured this damp Ribblesdale cave fitted the bill. I say reopened, however it had always been open to the bubble blowers but the “dry” entrance had slumped many years back and remained blocked since.

Cue one sunny Monday evening, where we drove through a shower, which didn't inspire confidence, however all was well and the forecast and rainfall radar suggested it would be ok. Parked up on a chilly roadside, despite the sun shining the wind was taking the edge off the temperature!

The long walk ensued, all hundred or so metres, most acceptable for an evening trip. The well built entrance was easily located in the large shakehole, in we went and in a matter of metres you reach a lip into very deep water. At the date of this trip there were two little rubber rings, a little ladder to lower yourself into the water and a rope stretching out in front. For this first section it is fairly easy to traverse to the corner and various tactics meant that we didn't really use floatation aids much for the remaining deep sections

– some out of depth, some neck deep. An enjoyable section of cave that I was glad to be wearing my neofleece, even if it is somewhat tight on me these days!

After the wet start the cave generally becomes a pleasant and typical winding canyon passage, very nice indeed. After a while you reach a little waterfall, more a trickle on our visit. With black cherty, crumbly ledges it is not something I'd fancy climbing, luckily though there was an in-situ rope that looked to be in reasonable condition as did the krabs/anchors at the top.

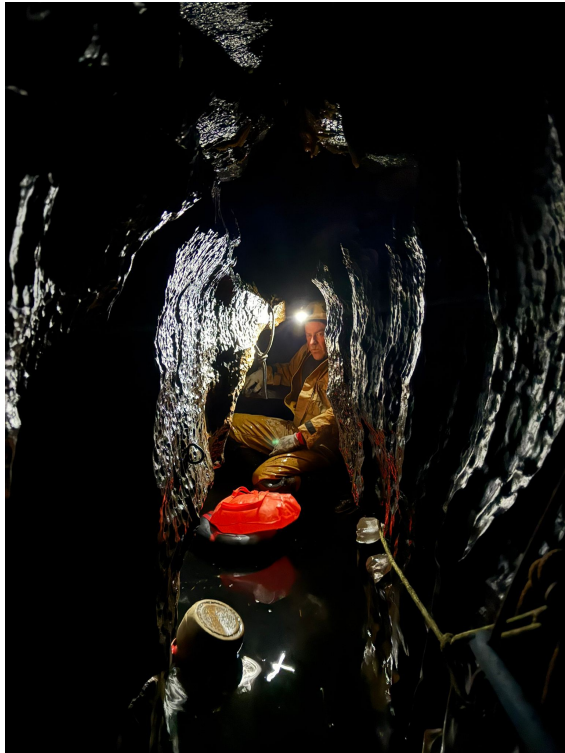
From here the cave continues in mixed fashion passing through a reasonable sized chamber before eventually arriving at a junction. Straight ahead looked low and uninspiring and from what we'd read, sounded it too. We opted to swing left into Rising Mirth Passage, which is a very fine section of passage.



Very much mixed going, a few obstacles to clamber over and this pleasant passage eventually ends in a chamber with pool and splashy waterfall. After much faffing by Rob with his phone trying to take a photograph we made the return journey.

Ribblehead might not have the length or depth of other areas in the Dales but it does have some cracking little caves for evening trips or tying a few together for making a longer day out. The obligatory pint was had in the Station, where we hoped to try and gain some feeling back in our feet!

*Duncan Jones*



*Photos – Rob Santus*

*A [Black Rose Caving Club](#) trip report.*